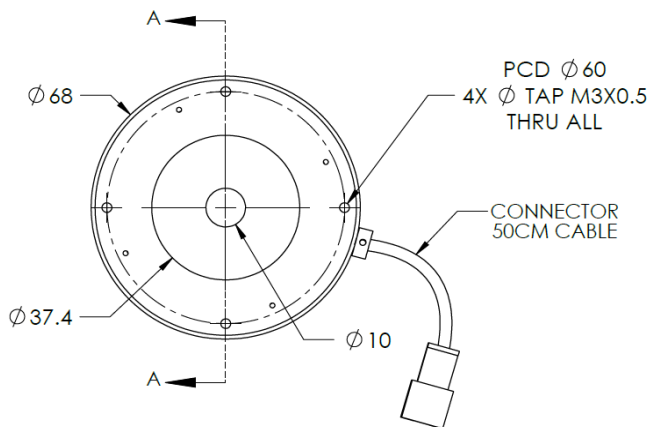
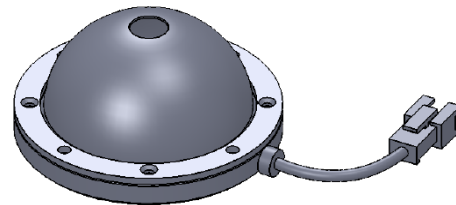
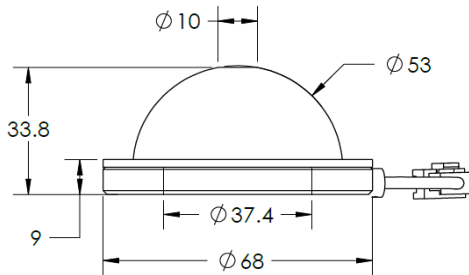




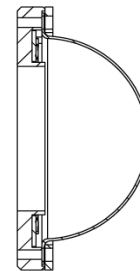
# ILLUMINATOR DATA-ID

## IDS5-00-050-1-G-24V

### Lighting Dimension



SECTION A-A




| Mechanical Information    |                              |
|---------------------------|------------------------------|
| Casing Material           | Aluminium                    |
| Storage Temperature Range | Temp 0-45°C, Humidity 20-85% |
| Weight                    | 78 g                         |
| Length / Outer Diameter   | 68 mm                        |
| Width / Inner Diameter    | 10 mm                        |
| Thickness / Height        | 33.8 mm                      |



# ILLUMINATOR DATA-ID

## IDS5-00-050-1-G-24V

| Optical Information  |        |   |             |             |
|--|--------|---|-------------|-------------|
| Part Number  |        | IDS5-00-050-1-G-24V   |             |             |
| LED Color  |        | GREEN   |             |             |
| Wavelength   | (nm)   | 540   |             |             |
| Intensity (±15%)   | (Lux)  | 97000   | 43100 23800 |             |
| Working Distance   | (mm)   | 20  | 30 50       |             |
| Illumination (number of row)   |        | 1   |             |             |
| Illumination Active Area   |        |   |             |             |
| Active Length / Outer Diameter   | (mm)   | 37.4  |             |             |
| Active Width / Inner Diameter  | (mm)   | 10  |             |             |
| Emission angle   | (deg.) | 0   |             |             |
| Eye Safety Class ( IEC62471 )  |        | EXEMPT  |             |             |
| Electrical Information   |        |   |             |             |
| Lighting Supply Voltage<br>(constant voltage mode)                                   |        | 24V ± 2%  |             |             |
| Continuous Current   | (mA)   | 315   |             |             |
| Power Consumption  | (W)    | 7.56  |             |             |
| Lighting casing temperature,<br>Operating after 60 minutes                           | °C     | 56  |             |             |
| Strobe Mode Specification  |        |   |             |             |
| Pulse Operation  |        | YES   |             |             |
| Max. Lighting Supply Voltage<br>(Constant voltage power supply)                      | (V)    | Pulsing at 24VDC to 48VDC, 0-10% Duty Cycle, Recommended at 36VDC                                   |             |             |
| Pulse Current, (Max. 10msec)<br>(Constant current power supply)                      | (mA)   | 945   |             |             |
| Max. Trigger Pulse Duration  | (msec) | 10  |             |             |
| Duty Cycle   |        | 0-10%   |             |             |
| Additional Information   |        |   |             |             |
| Additional Cooling Method  |        | Attached to machine part for better heat dissipation  |             |             |
| Intensity Controller Selection   |        | ANG, ST, SD and SDA Series  |             |             |
| CE Conformity  |        | YES   |             |             |
| RoHS Compliance  |        | YES   |             |             |
| Connection   |        |   |             |             |
| Connector Type (Default):  |        | JST SMR-03V   |             |             |
| Cable Length out from lighting :   | (mm)   | 500   |             |             |
| Pin Configuration :  |        | Pin   | Signal      | Cable Color |
|  |        | 1   | LED +       | RED         |
|  |        | 2   | N.C.        | ---         |
|  |        | 3   | LED -       | WHITE       |
|  |        |   |             |             |
| Application  |        |   |             |             |
| Illumination Type  |        | Indirect Illumination   |             |             |
| Applicattion Use   |        | Crack, chip, stains on circular or cylindrical objects, solder inspection and substract inspection. |             |             |



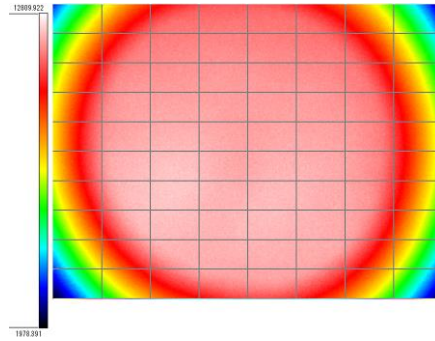
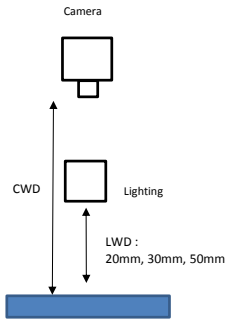
# ILLUMINATOR DATA-ID

## IDS5-00-050-1-G-24V

### Uniform Graph ( Relative Irradiation Strength) - Representative pattern

Lens focal length,  $f = \text{infinity}$   
CWD = 230mm  
LWD = 20mm, 30mm, 50mm  
Lighting angle:  $0^\circ$

| Tolerance | L X W   |
|-----------|---------|
| 10%       | 14 X 12 |
| 20%       | 17 X 16 |
| 30%       | 18 X 16 |
| 40%       | 20 X 16 |



\* 1 cell = 2mm x 2mm