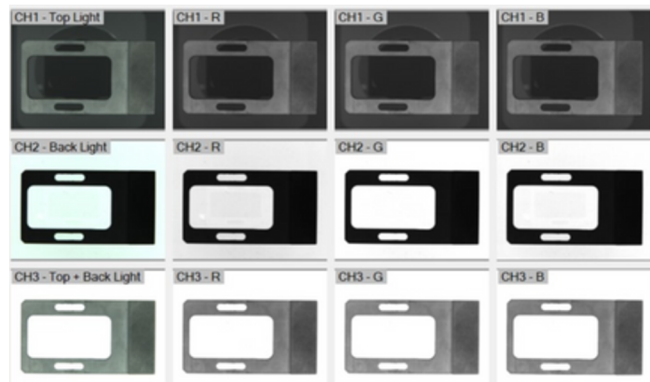


## Item List :

1. Industrial PC with a built-in controller
2. Display Screen
3. Fixed Camera Mounting
4. BHD-00-340X250-1-W-24V (Backlight)
5. BHDQ-00-340X250-1-W-24V (Frontlight)

## Sample Application



## Objective:

1. Provide a facility that has most of the machine vision components to help engineers easily start their projects.
2. The station can work with simple applications.

## Features

- Frontlight can create an evenness when penetrating the object.
- Backlight can perform simple application such as checking for object absence/presence, edge detection and so on.
- It contains software that can control the lighting and display the results of the application.
- The display screen has touchscreen functionality.
- It has a built-in industrial PC with a lighting controller

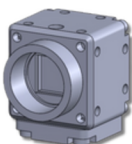
## Advantages

- IPC programmable
- Contains 2 different lighting setups in one station.
- Single software controls both lighting and the camera.

## Benefits

- Save time and cost
- Able to perform multiple types of application testing.
- Easy to use.

## Optional



**Camera**



**Lens**

✉ [quotation@tms-lite.com](mailto:quotation@tms-lite.com)

☎ +6012-444 6850

Please feel free to reach out to our sales team for a discussion and any additional assistance